

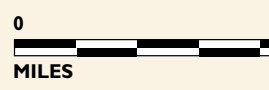
SUMMER IN CAMAS COUNTY

LEGEND

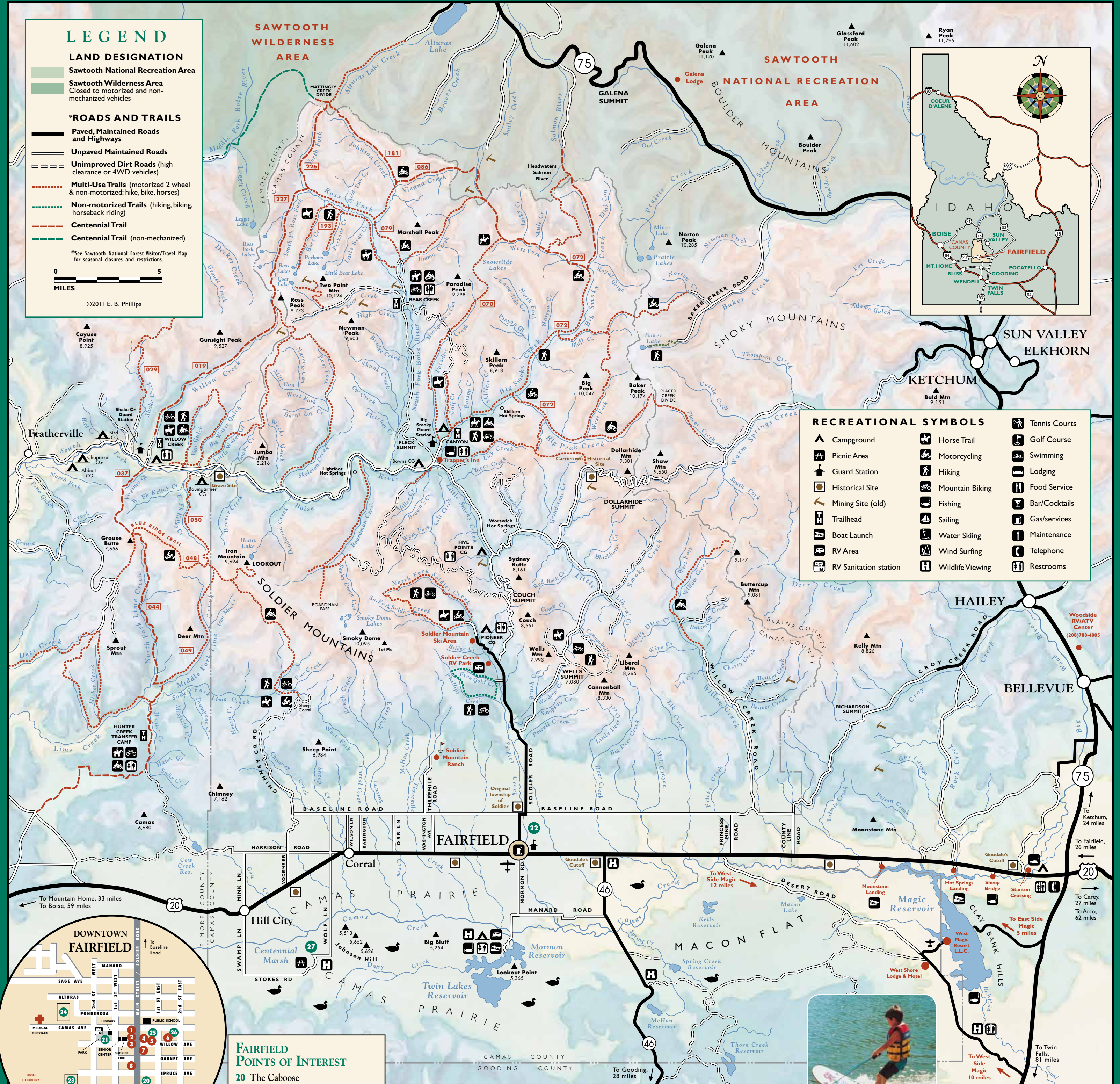
LAND DESIGNATION

- Sawtooth National Recreation Area
 - Sawtooth Wilderness Area
Closed to motorized and non-motorized vehicles
- ### *ROADS AND TRAILS
- Paved, Maintained Roads and Highways
 - Unpaved Maintained Roads
 - Unimproved Dirt Roads (high clearance or 4WD vehicles)
 - Multi-Use Trails (motorized 2 wheel & non-motorized: hike, bike, horses)
 - Non-motorized Trails (hiking, biking, horseback riding)
 - Centennial Trail
 - Centennial Trail (non-motorized)

*See Sawtooth National Forest Visitor/Travel Map for seasonal closures and restrictions.



©2011 E. B. Phillips



RECREATIONAL SYMBOLS

- | | | |
|--|--|--|
| | | |
| | | |
| | | |
| | | |
| | | |
| | | |
| | | |
| | | |
| | | |
| | | |



- ### FAIRFIELD DOWNTOWN BUSINESS INDEX
- www.fairfieldidaho.us • City Hall 208-764-2333
- 1 Soldier Creek Brewing Company 764-2739
 - 2 Sandwiched Inn & Deli (208) 764-2100
 - 3 The Cliff Bar 764-2543
 - 4 Town & Country Realtors 764-2026
 - 5 Camas Courier (Newspaper) 764-3322
 - 6 Camas County Preschool & Day Care 764-2146
 - 7 U.S. Bank 764-2277
 - 8 Strickland Real Estate 764-3011
 - 9 Prairie Inn (Overnight Lodging) 764-2247
 - 10 Claude's (Sporting Goods) 764-2319
 - 11 The Sawtooth Grill (For Sale)
 - 12 Wrangler Drive In (Restaurant) 764-2580
 - 13 Camas Creek Store (Gas & Groceries) 764-2211
 - 14 Iron Mtn. Inn (Restaurant & Bar, RV Park) 764-2577
 - 15 High Country Fusion 764-2000

- ### FAIRFIELD POINTS OF INTEREST
- 20 The Caboose (Tourist Information) (208) 764-2230
 - 21 4-H Park (Annual 4-H Fair 1st weekend in Aug.)
 - 22 Snowcross Arena
 - 23 Baseball Field
 - 24 Football Field
 - 25 Legion Hall (Meetings 1st & 3rd Weds.)
 - 26 Historic Museum
 - 27 Centennial Marsh (No. on lg. map) (Camas lilies in bloom May 15-June 15)
 - 28 Industrial Park



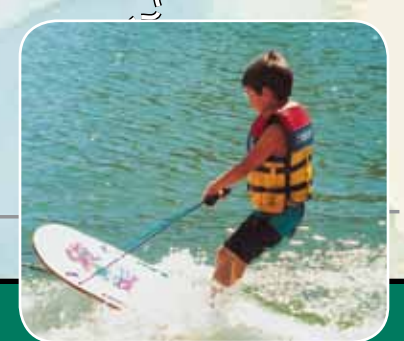
RECREATIONISTS CODE OF ETHICS

- Respect the rights of other recreationists. Stay on the designated trail.
- Keep to the right when meeting another traveler. Yield the right-of-way to traffic moving downhill. Do not block a trail.
- Slow down and use caution when approaching or passing another traveler.
- Honor regulations and closures on public and private land. Close gates behind you. Avoid running over small trees, bushes, fences or campsite improvements.
- Respect private property and the privacy of those who live there.
- Respect nature and wildlife. Please do not harass the wildlife or farm animals. View them from a distance.
- Pack out everything you bring in. Please do not litter. Tread lightly.



NOXIOUS WEEDS

Noxious weeds are the cancer of our land. They multiply rapidly, choking out native vegetation and destroying wildlife habitat. Approximately 200 acres of Idaho land are taken over by noxious weeds per day. To report or learn more about noxious weeds, call 1-866-IDWEEDS. You can help stop the spread of noxious weeds in Idaho.



RECREATION SITES

- West Magic Resort L.L.C. West Magic Reservoir (208) 487-2571
- Soldier Creek RV Park (208) 764-3904
- Iron Mtn. RV Park (208) 764-2577
- Soldier Mountain Ranch Country Club & Resort (208) 764-2506
- Soldier Mountain Ski Area
- Trapper's Inn (Summer only)
- West Shore Lodge & Motel* (208) 487-3636